

THE WHEATLAND ROUNDUP

WWW.WHEATLANDEXPRESSTRAIN.CA

THE NEXT MAYOR OF LITTLE BIG TOWN

There are only a few more weeks left until the next mayor of Little Big Town is chosen. The candidates have been very busy trying to earn votes from the town's people. Every candidate has been sure to attend the Wheatland Express Excursions to talk to as many people as they can to gain votes. Each candidate has their own personal pin they have been handing out as well. The following names are this year's runners for mayor and their slogans, if you haven't had the pleasure of meeting them yourselves:

Each competitor has gained a lot of popularity in the town! Some would say that George is the underdog since this is his first year running and for the others, it is their second. Nonetheless, George has done a good job at getting his name out there and is not far behind the rest of them!

It will be a close race and it's hard to predict who will win the election. If Taffy gets the majority of the votes, she will be the first female mayor the town of Little Big Town has ever had. Even if she goes another year without being titled mayor, she is the first ever female candidate, which is a big accomplishment in itself!

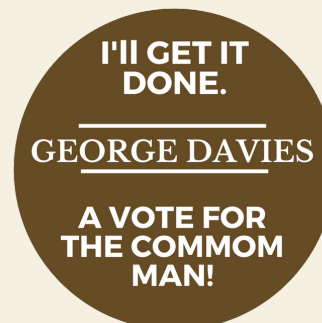
Mayor Calloway has been the mayor of Little Big Town for two years in a row which puts him at a great advantage. Although a big part of the town is in favor of a change in leadership, there is still a large portion

who aren't too comfortable with any change at all. As a small town, that is used to routine and things staying the same, change of any kind can be hard to accept.

Probably the most popular of the candidates is Max Wheatland. Although his arrogance and talk of money can throw people off, there isn't one person of the town who doesn't know his name. Bringing a lot of traffic to the small town, Max would be beneficial to have in the mayor's chair.

Although the election season is coming to a close, there is still time for the candidates to get people on their side to earn votes. It always comes down to one question : who will keep the town safe from the Blackjack Gang?

Who do you think can get the job done? Who will you vote to be the next mayor of Little Big Town?



NOBLE NOTATION

TOOT! TOOT!

Written by Bill Noble

We are pretty much surrounded by communication. Even a simple act like asking “Hey, Siri, what’s the weather going to be like today”, will set off an avalanche of technological systems, worldwide, with the sole purpose of answering our question – Right Now. Of course, it wasn’t that long ago that communication beyond the range of our individual senses was “unheard of”. As civilizations grew so too did their knowledge bases and the need to share that knowledge and information. And of course, this gives me a perfect opportunity to tell a story. Today I will focus on how train crews communicated in order to operate safely and efficiently before radios or cell phones.

Railways grew from a single engine pulling a single car on one track, operated by one or two people, in daylight, on a nice summer day. As operations became more complex, and extended into the dark hours in all weather, a serious order of business was to ensure the crew could work safely. The basic need was for everyone to “be on the same page” and to know what was going on. The centre of the communication system that evolved was the engine crew – the engineer and fireman were in charge of the largest, most dangerous machine and had for their use the whistle and the bell.

Bells and whistles have been a part of railway engines since the beginning –



loved as much for their artistry as for their actual purpose as warning and communication tools. Steam whistles were made from brass and iron castings and were mounted high atop the boiler to show off their polished beauty and to tap into the dry steam high in the boiler. Dry steam produces crisp, consistent sounds designed to create musical-note tones; tones that were often unique to particular railways. Whistle sounds ranged from the high-pitched, chirpy “Peep Peep” of French locomotives to the deep sonorous moan of the “steamboat” whistles favoured by railroads in the American deep South. Whistles were operated by a cord or cable by the engineer who could play the whistle like a musical instrument. Indeed, some hoggers were “whistle artists” who could be identified by the sound of their approach. All part of the mystique, dash and swagger of the railroad man.

Locomotive bells were cast from brass and were tuned to produce clear, pleasing tones. Bells, swung by a cable-operated lever or struck by an air-operated ringer, were rung by the fireman. Traditionally, bells were mounted atop the boiler or on the front of the engine so that their warning peals would project ahead of the train. Bells were highly

polished and, on some railways, had their clappers and interiors painted - glossy black or bright, Chinese red were favourite colours. Figure 1: An Edwardian Classic - Grand Trunk Pacific's No 67 shows off her whistle atop the small dome ahead of the cab and the bell just behind the stack. Although this scene was photographed at St. Lazare in western Manitoba, GTP 67 roamed Western Canada and probably ventured up the Cudworth Subdivision - the home of the Wheatland Express.

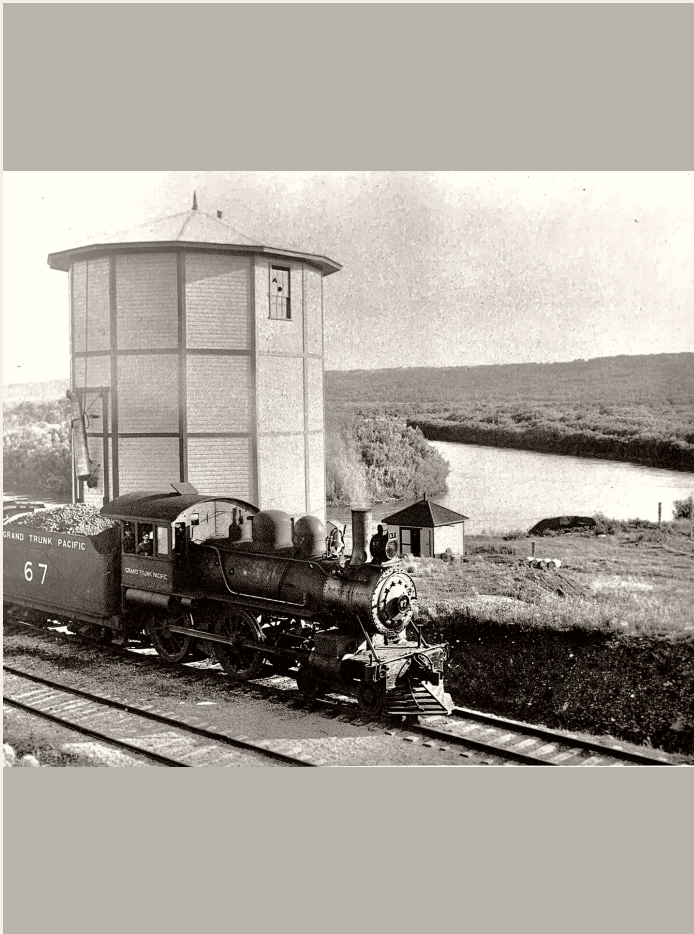


Figure 1: Grand Trunk Pacific 67 showing off her bell and whistle.

National Archives of Canada/C 010723

But, whistles aren't just for playing tunes. They were and remain a warning of a train's approach and a way to communicate with other rail workers.

They were vital parts of the system of communication that kept train crews safe by allowing the engineer to tell other workers what he planned to do and acknowledge what he expected them to do. Those crew members whose jobs required them to be on the ground or on the ladders and roof walkways of the cars - conductors, brakemen, switchmen, flagmen and track workers - "talked" to the engine crew with hand signals. The brakeman's lantern permitted the same signals to work at night. These ground-based workers had to be visible to the engine crew, or be where they were expected to be, at all times, and had to listen carefully for the whistle signals to ensure their safety.

Table 1, on the following page, is a reprint from a Google/Wikipedia article and lists the whistle signals in use across North America during the steam era. Not all of these signals are in use today, crew members operating on the ground now have radios. However, we still hear some of these same signals today even though they are now delivered by the blat of a diesel air horn. Two toots still warns of movement, three means backing up and --.- is the international warning for approaching a grade crossing. As part of this last warning signal, railroads are required to erect the familiar "W" signs - whistle posts - to alert locomotive crews not less than $\frac{1}{4}$ mile before grade crossings.

So, the next time you hear a diesel horn, remember it is being blown to keep us all safe.

Table 1: Whistle signals – Copied from Google/Wikipedia

Signals illustrated below are for North American railroads, "." for short sounds, and "-" for longer sounds.

Sequence	Meaning
Succession of short sounds	Used when an emergency exists, or if persons or livestock are on the track.
—	When train is stopped. The air brakes are applied, and pressure is equalized.
— —	Train releases brakes and proceeds.
. .	Acknowledgment of any signal not otherwise provided for.
. . .	When train is stopped: means backing up, or acknowledgment of a hand signal to back up; when moving: stop at next station.
. . . .	Request for a signal to be given or repeated if not understood.
— . .	Warning that a second section of a timetabled train is following.
— . . .	Instruction for flagman to protect rear of train.
— — — —	Flagman return from the west or south.
— — — — —	Flagman return from the east or north.
— — . —	Train is approaching public grade crossing(s). This is known as Rule 14L in almost all railroad operating rules. (Mostly heard in the United States and Canada and sometimes Australia.)
— .	Inspect the brake system for leaks or sticking brakes.

Sources

Books:

Bryant, Homer Stafford. *The Georgian Locomotive: Some Elegant Steam Locomotive Power in the South and Southwest, 1918–1945, an Episode in American Taste.*

Barre Gazette, 1962

McQueen, Donald R., *Canadian National Steam: A Locomotive History of the People's Railway.*

Railfare DC Books, 2013

McQueen, Donald R., *Canadian National Steam Volume 2 – Rosters*

Railfare DC Books, 2013

Murray, Tom. *Canadian National Railway.*

MBI Publishing, 2004

Other Publications

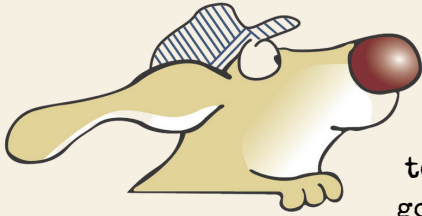
Barone, Mike. *CN Lines Volume 16, Number 3. CNR Steam Locomotive Bells and Whistles.*

CNR Historical Association, 2012

Other Resources

Google/Wikipedia website, Whistle Signals

National Archives of Canada, Ottawa



SPIKES SAFETY SCOOP

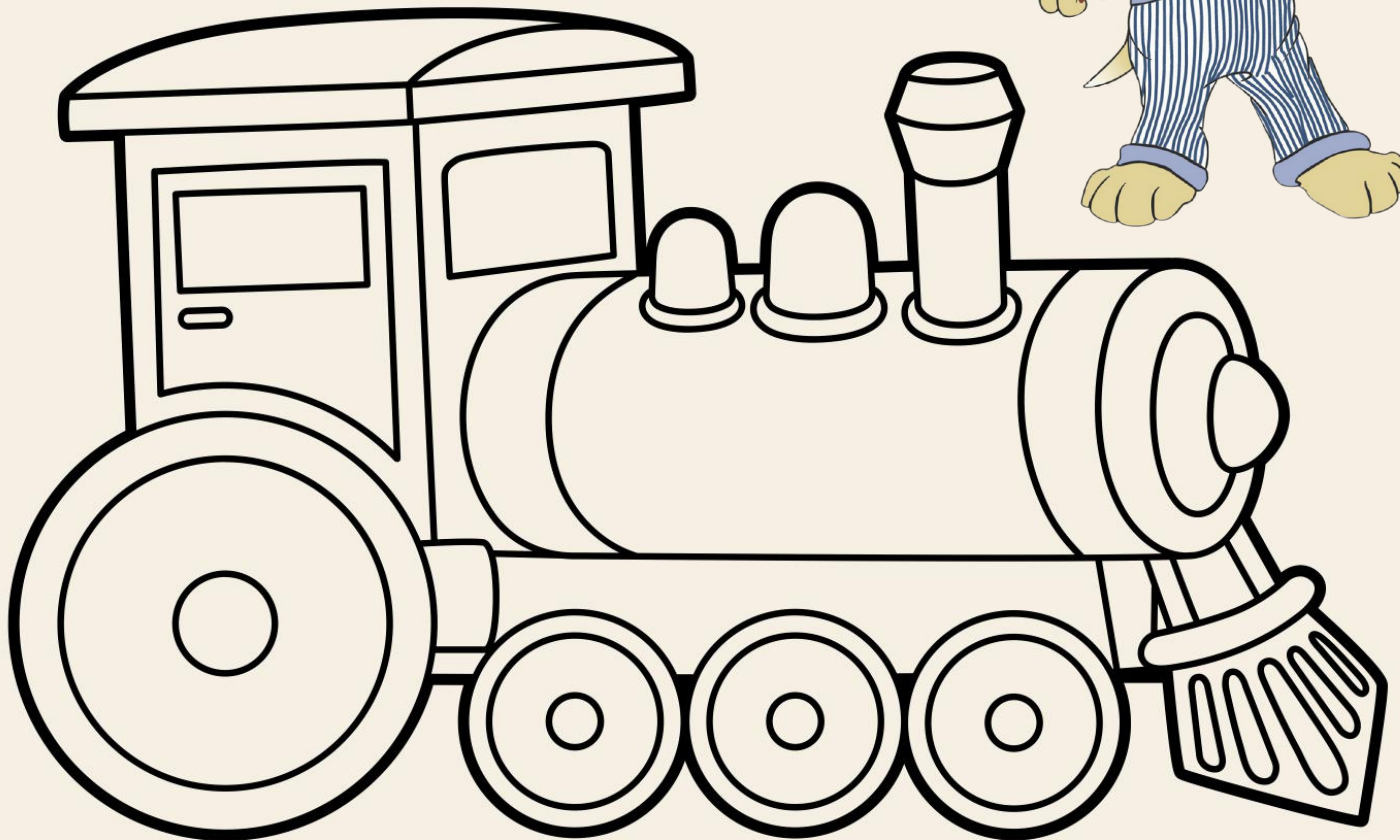
Hello everyone! My name is Spike the safety dog and I love teaching people all about train safety. It feels like the summer has gone by SO fast! Although the summer has been so much fun, I love to learn and to teach so I'm so excited for the next school year. Since school is just around the corner, I thought I'd teach you all some fun train safety facts to keep everyone rail smart for the school season! Did you know that it takes a train 2 kilometers to stop? That's about 18 football fields! Another fun fact is that trains weigh the same as 10,000 pick-up trucks! That's A LOT! Trains are very big and heavy and that's why it takes them so long to stop. This is why it's so important to STOP, LOOK and LISTEN before crossing railway tracks and to only cross at railway crossings. Learning fun facts about trains is a great way to teach yourself and others how to stay safe around trains! Can you think of any fun facts? I'm going to go quiz my friend Gainer on his train safety knowledge now! I hope everyone had a safe summer and have a great start to their school year! See ya next time!

Did you know, an empty railway boxcar can weigh up to 30 tons?!



-Spike the safety dog

Help Spike colour his locomotive



OPERATIONS UPDATE



Wheatland Express Safety Train

We have been getting ready for the school year by printing activity books and packing them up so they can be sent off to all the grade 4s around the province! We have also been getting ready for Railway Safety week which is September 19th-25th 2022! We are excited to share more Railway tips during railway safety week so stay tuned to our Facebook and Instagram to learn about those tips and about upcoming contests and prizes!



Wheatland Charities Inc.

We have raised the following on the train Heists as we build towards our goal of \$5,000 to Saskatoon:

City Hospital Wellness Center. This includes August 28ths record breaking day of \$1012.00.

June 11th Train Heist raised = \$755.00

June 19th Train heist raised = \$703.65

July 10th Train Heist raised = \$630.10

July 31st Train Heist raised = \$980.00

August 28th Train Heist Raised = \$1012.25

Thanks to all that helped attending the events and for the support!

Tom and Jerry continue to work hard to save horses from Slaughter . Donations to Tom and Jerry will allow us to purchase a horse or horses on their way to slaughter. At the farm the horses will be cared for trained and then, hopefully, a new for ever home will be found. Tips collected from their wagon ride and returned bottles and cans from the train is their source of income.



Weatland Express Excursion Train

The month of August for Wheatland was a busy one despite us having to cancel the Shania Twain Tribute and dinner show for August 13, our Murder Mystery and The Great Prairie train excursions were always sold out. We had very large groups including the return of Engelheim Tours with their group. We also had a 90th birthday celebration and everyone had a great time.

We are looking forward to our tours in September providing one of a kind experience for our valued customers.



Wheatland Express Learning Centre

The baggage car is coming together. It has the walls up and all the electrical work is done. The guys have been doing an amazing job and soon enough it will be done. We are so excited for it to be done so we can add our displays to the car. Soon we will be able to share our displays in the new car and have everyone enjoy it as much as we do!



Great Sandhills Railway

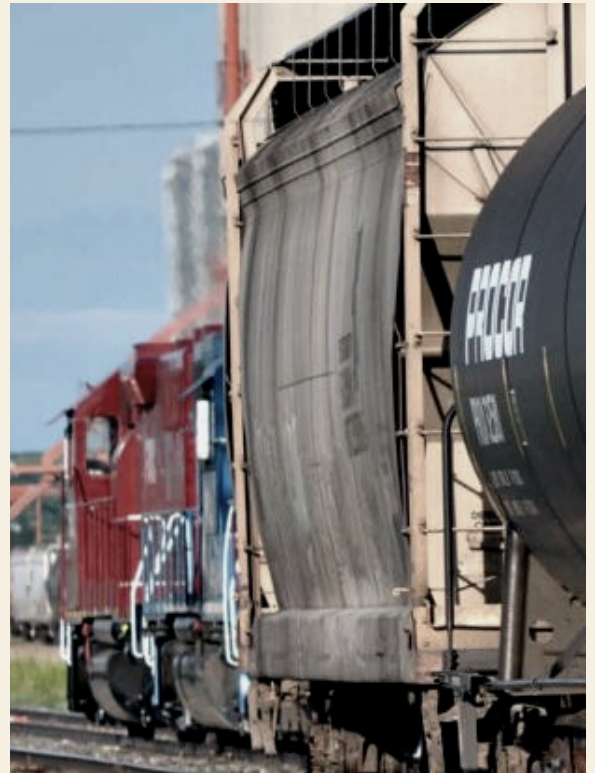
October 5th has been set for the court case against CN rail. We feel we have a good case and are even more confident in

our representative Tucker (Aka Matlock).

The line itself has never looked better as weed and grass cutting continued. Not only does it look better, it will help this winter with Snow drifting.

We are making great progress on the new Baggage car and it may be complete for the September 17th train. The car will house the inductees for the Current year for the Railway hall of fame. It will also have interactive displays for young and old. It will also serve as home for the Alibi lounge. Finally, it will have a room for our actors to change.

Rafters for the 9 mile Saloon have been ordered and work on the saloon itself will begin in September.



Western Canadian Railway Hall of Fame

Railway Employees have been a integral part of the building of Canada. The dedication that many displayed over the last 100 plus years has helped make Canada what it is today. We want to recognize those that committed their time and effort to the railway industry. You can nominate your mom, dad, grandmother, grandfather or even your mother-in-law. Entry forms will be available to briefly describe the nominees service and special notations of community service or Railway firsts.

The winners will be awarded annually with their plaque honoring their selection being on display in the newly refurbished railway learning and history centre car. The nominee or the nominees designate along with the person nominating will be awarded two tickets to a supper show and ride on the Wheatland Express!



Four Categories-

Operations: Train Crews, Dispatchers, Train Masters, Yardmasters, Superintendents

Maintenance: Track Maintenance, Car Repair Maintenance, Signal Maintenance

Builder: A person involved in non operating activities

Historical: A person that participated in any railway activity that no longer exists.

Entry Deadline: December 31, 2022

Open to all Railway employees past and present

STRAIGHT FROM THE HORSES MOUTH

HOW TIMBIT SEE'S IT

Neigh there. I'm Timbit, a reporter for the Wheatland Round-Up. My job is to keep the folks of Little Big Town updated to the goings-on on all things four-legged. It has been a while since we have checked on our big friends, Tom and Jerry. Let's trot on over to their pen to see how they are!

Hiya guys! You two have had a busy summer so far! How has it been going?

"It's been exhausting!" sighs Tommy.

"Don't be so dramatic Tommy! It has been a lot of fun going out to the excursions this year. We have a new route to take the visitors on rides and we always get LOTS of treats!" says Jerry.

"The treats are good, yes! One good thing is that my harness sure does fit me better! The girls have been taking us out for wagon rides down the road which has helped keep us both in shape so we are ready for all of the excursions!" Adds Tommy.

I hope you guys still have time to relax this summer with all these activities on the go!

"Tommy always finds time to relax." Jerry says

"That's right! Laying in the sun on the warm sand is my favourite thing to do during the summer. That and eat!" says Tommy

"I like sun bathing too but I also love when the girls come and groom us! When you are this big, it gets a little hard to reach where you're itchy!" Adds Jerry.

I'm glad to hear you guys are having good excursion season! I'll be sure to visit again soon!



EMPLOYEE PROFILE

Name: Dana Keshane

Born: Wynyard, SK

Currently Reside: Saskatoon, SK

Work History: Dana has worked at the race track most of his life. From 2015-2020 he worked at Northlands Park Racetrack & Casino before working at the farm

Favorite Movie: Shawshank Redemption

Favorite Sport/Sports Player: Horse Racing and Hockey player son, Kaylon

Favorite Wheatland Equipment: The snow fighter

Did you know: Dana helps drive the heavy horses at most excursions!



Dana and his daughter with Mondaynitelites

2022 WHEATLAND EXPRESS SCHEDULE

AUGUST

14- Murder Mystery
21- Murder Mystery
28- Prairie Train Heist

SEPTEMBER

10- Prairie Train Heist
17- Prairie Train Heist

OCTOBER

28- Halloween Ghost Train
29- Halloween Ghost Train

DECEMBER

02- Christmas Express
03- Christmas Express
10- Christmas Express
11- Christmas Express
17- Christmas Express



STAY TUNED FOR ADDED DATES, TOURS
AND TRAVEL OFFERS!

www.wheatlandexpresstrain.ca